



THE  
**Northern  
Sydney  
Institute**  
Part of **TAFE** NSW



## DOUBLE DIPLOMA OF **LEADERSHIP AND MANAGEMENT** NATIONAL CODE: BSB51915 AND **HUMAN RESOURCES MANAGEMENT** NATIONAL CODE: BSB50615

Gain two qualifications at the same time with our double diplomas.

Fast-track your learning and prepare yourself for that next step in your career.

Our Double Diploma of Leadership and Management and Human Resources Management is designed to provide you with the right range of skills set that will enable you to perform professionally in leadership and human resources roles within the business sector. All subjects are taught by industry experts and showcase the latest trends and practices in the industry.

### DURATION

18 months.

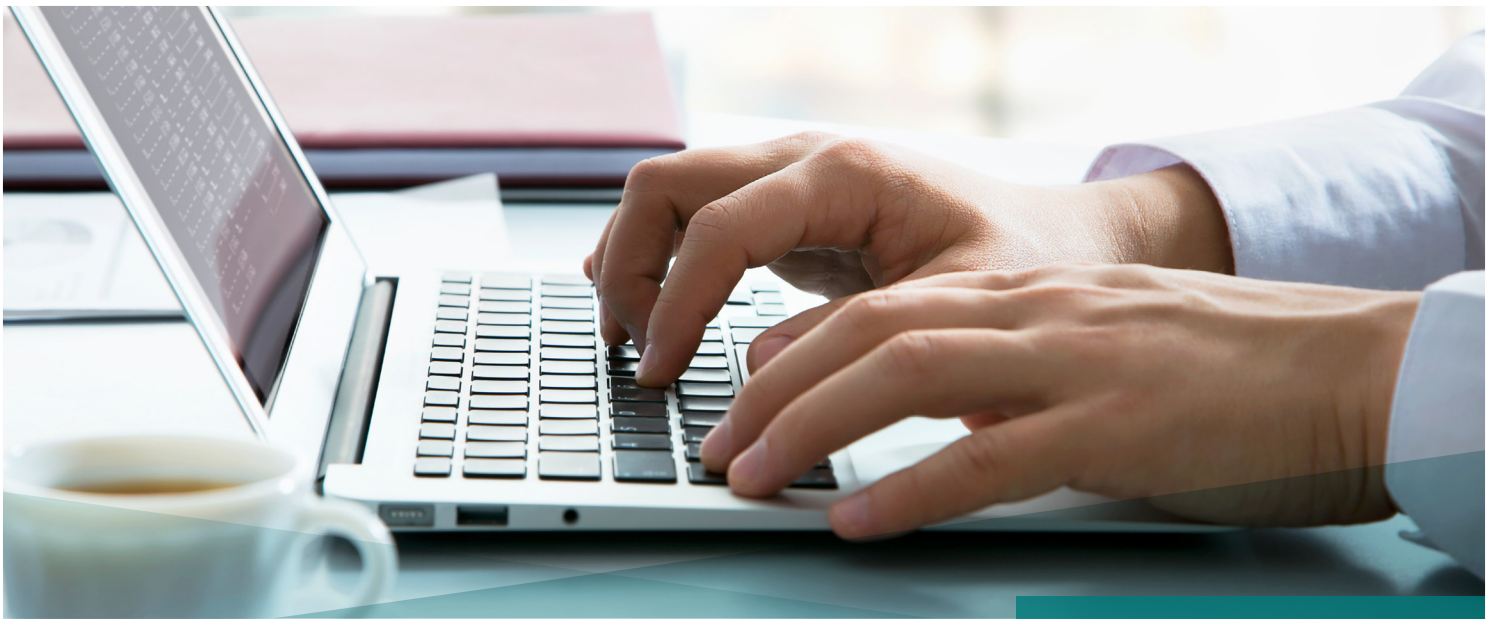
### STRUCTURE

To receive the Double Diploma you will only need to complete 14 units compared to 21 units if you studied them separately.

BSBLDR501	Develop and use emotional intelligence
BSBMGT517	Manage operational plans
BSBLDR502	Lead and manage effective workplace relationships
BSBWOR502	Lead and manage team effectiveness
BSBPMG522	Undertake project work
BSBMGT516	Facilitate continuous improvement
BSBMGT502	Manage people performance
BSBRSK501	Manage risk
BSBHRM501	Manage human resources services
BSBHRM513	Manage workforce planning
BSBHRM512	Develop and manage performance-management processes
BSBHRM506	Manage recruitment selection and induction processes
BSBWRK510	Manage employee relations
BSBWS401	Implement and monitor WHS policies, procedures and programs to meet legislative requirements

Unlock your potential. **It starts here.**

**Call** 131 674 or **visit** [nsi.edu.au/studyonline](https://nsi.edu.au/studyonline)



## PREFERRED PATHWAY

While there are no formal educational requirements for entry, the preferred pathway is the completion of the Certificate IV in Human Resources, Frontline Management or Leadership and Management. Equivalent industry experience will also be considered. To help us assess your suitability for this course you may be asked to provide evidence of your previous qualifications and experience.

## LEARNING PATHWAY

Students who complete this course may continue with a pathway that leads to an advanced diploma course from the Business Services Training Package.

Students who complete a diploma or advanced diploma may also apply for direct entry into the Australian Catholic University or Macquarie University or may enrol in the Bachelor of Business Studies at Charles Sturt University, delivered at the Northern Sydney Institute's Crows Nest Campus.

For further information about our degree programs go to [nsi.edu.au/degreeprograms](http://nsi.edu.au/degreeprograms).

## INVESTMENT

\$6,900

## TERMS AND CONDITIONS

- » Withdrawals must be submitted on the 2016 Withdrawal/Refund Application form for VET FEE-HELP students.
- » Students withdrawing from a unit of study after an advertised Census date, will be liable for the TAFE NSW full tuition fee or VET FEE-HELP debt for that unit of study.

*TAFE NSW courses commence only if there are sufficient resources and demand. Every effort was made to ensure this information was accurate as at August 2016. Changes may have taken place since that time. Contact the Northern Sydney Institute, part of TAFE NSW to confirm course details and availability.*

## THE BENEFITS OF OUR ONLINE DUAL DIPLOMAS



### ONLINE

Fit study around your work and lifestyle.



### SAVE TIME AND MONEY

Finish studies in a shorter time and save money. Complete subjects common to dual qualifications and receive credit which reduces study time and unnecessary fees.



### RECOGNITION OF PRIOR LEARNING

Get your prior learning or experience credited towards a course of study.



### VET FEE-HELP

VET FEE-HELP is available for eligible students so that you can study now and pay later.



### GOVERNMENT SUBSIDISED

The government will pay part of your fee and you pay the balance if eligible.



NATIONALLY RECOGNISED  
TRAINING

**CONTACT US  
TO ENROL**

 (02) 9448 4518  [nsi.onlinecourses@tafensw.edu.au](mailto:nsi.onlinecourses@tafensw.edu.au)  
 [nsi.edu.au/studyonline](http://nsi.edu.au/studyonline)