



# SAP ERP - INTEGRATION OF BUSINESS PROCESSES TERPe

COURSE CODE: 158-25347V1

NOT NATIONALLY RECOGNISED TRAINING

Take your career to the next level and meet the growing demand for professionals who are skilled at using and configuring SAP solutions.



This course provides you with a broad knowledge of the core business processes, business interrelations and integration of business processes in SAP ERP.

You will learn how the fundamental business processes in procurement, production, planning, project management, sales, customer service, asset management, financial accounting, human resources and analytics interact within the SAP ERP application.

At the end of the course, you can take a certification examination. If you pass the examination, you will receive a SAP certificate from SAP Germany, which is a fully recognized qualification by industry.

## COURSE DELIVERY

This online program allows you to complete your Integration of Business Processes (TERPe) within three months. Studying online, anywhere, anytime, means you can control your own learning at a pace you are comfortable with.

## COURSE STRUCTURE

---

Overview of SAP ERP and SAP NetWeaver

---

Basic concepts used throughout SAP applications

---

Business processes in financial accounting

---

Business processes in management accounting

---

Purchase to pay business process

---

Material planning business process

---

Manufacturing business process

---

Inventory and warehouse management

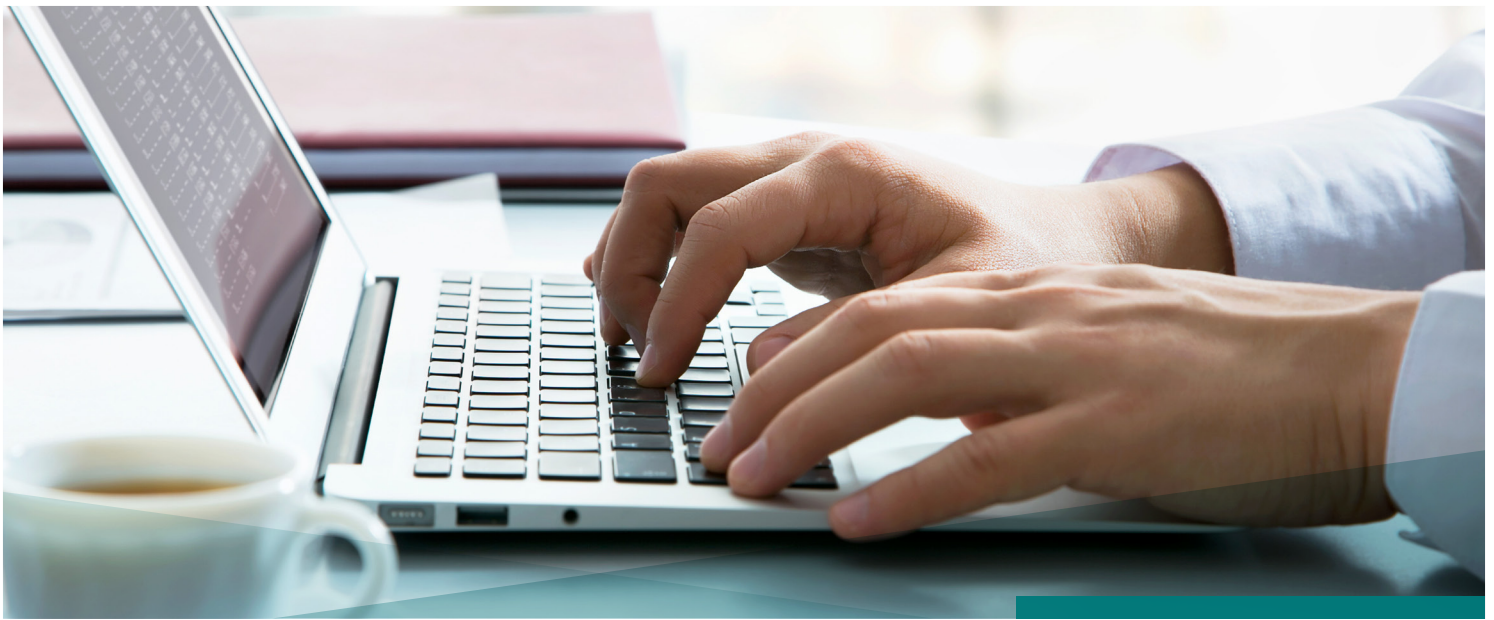
---

Lifecycle data management and customer service business process

---

Human capital management process overview

---



## ENTRY REQUIREMENTS

- Computer-literate
- English speaker
- Conceptual or practical knowledge of how companies manage their own businesses
- SAP ERP system navigation

## SUPPORT

Instructor presentations, system demonstrations and practical exercises.

Help desk support is provided by SAP for participants to enable them to understand the training material, resolve queries, and assist in assignments during the access period. In this timeframe, the participants will get access to training systems to work through the exercises and demo scenarios.

## INVESTMENT

**Course fee: \$3,300**

**SAP Certification: additional fee applies**

## TERMS AND CONDITIONS

- » Registration and payment must be received before you commence your online studies.
- » Students withdrawing from a qualification are required to notify their institute in writing.
- » No refunds are given once you are enrolled. However, a substitute may participate in your place.
- » If a course is cancelled you are entitled to a full refund.
- » Students are not eligible for refund of incidental fees.

*TAFE NSW courses commence only if there are sufficient resources and demand. Every effort was made to ensure this information was accurate as at December 2016. Changes may have taken place since that time. Contact the Northern Sydney Institute, part of TAFE NSW to confirm course details and availability.*

## THE BENEFITS OF OUR ONLINE STUDY



### ONLINE

Fit study around your work and lifestyle.



### NSI PLUS

A self paced program for our students.

**CONTACT US  
TO ENROL**



(02) 9942 3335



[nsi.onlinecourses@tafensw.edu.au](mailto:nsi.onlinecourses@tafensw.edu.au)



[nsi.edu.au/studyonline](http://nsi.edu.au/studyonline)