



# SAP HUMAN RESOURCES (HCM) MANAGEMENT AND ADMINISTRATION THR1e

COURSE CODE: 158-29615V01

NOT NATIONALLY RECOGNISED TRAINING

Take your career to the next level and meet the growing demand for professionals who are skilled at using and configuring SAP solutions.



The Human Capital Management (HCM) course provides you with the ability to carry out and navigate core SAP human resource processes.

You will learn how to integrate employees, processes, and strategies to support business goals within the SAP system, to allow you to take your career to the next level.

At the end of the course, you can take a certification examination. If you pass the examination, you will receive a SAP certificate which is a fully recognized qualification in the industry.

## COURSE DELIVERY

This online program allows you to complete your Human Resources (HCM) – Management and Administration (THR1e) within five months. Studying online, anywhere, anytime, means you can control your own learning at a pace you are comfortable with.

## COURSE STRUCTURE

---

Overview of SAP ERP Human Resources Management and Administration

---

Configuration of human resources master data

---

Configuration of time management

---

Reporting in human resources management

---

Mini case study

---

Organisation and configuration of payroll

---

Organisation management

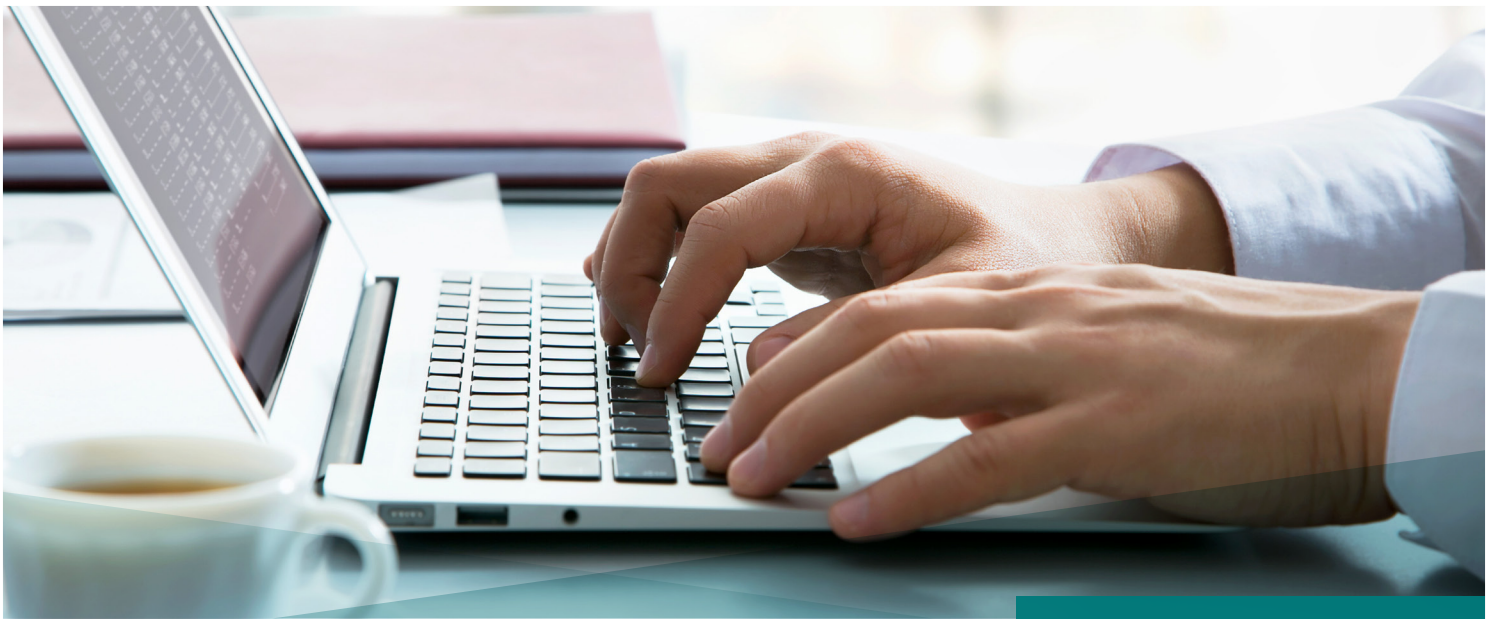
---

Integrated case study

---

Availability of forum discussions

---



## ENTRY REQUIREMENTS

- Computer-literate
- English speaker
- Conceptual or practical knowledge of how companies manage their own businesses
- SAP ERP system navigation

## SUPPORT

Instructor presentations, system demonstrations and practical exercises.

Help desk support is provided by SAP for participants to enable them to understand the training material, resolve queries and assist in assignments during the access period. In this timeframe, the participants will get access to training systems to work through the exercises and demo scenarios.

## INVESTMENT

**Course fee: \$5,000**

**SAP Certification: additional fee applies**

## TERMS AND CONDITIONS

- » Registration and payment are required and must be received before you commence your online studies.
- » Students withdrawing from a qualification are required to notify their institute in writing.
- » No refunds are given once you are enrolled. However, a substitute may participate in your place.
- » If a course is cancelled you are entitled to a full refund.
- » Students are not eligible for refund of incidental fees.

*TAFE NSW courses commence only if there are sufficient resources and demand. Every effort was made to ensure this information was accurate as at December 2016. Changes may have taken place since that time. Contact the Northern Sydney Institute, part of TAFE NSW to confirm course details and availability.*

## THE BENEFITS OF OUR ONLINE STUDY



### ONLINE

Fit study around your work and lifestyle.



### NSI PLUS

A self paced program for our students.

**CONTACT US  
TO ENROL**



(02) 9942 3335



[nsi.onlinecourses@tafensw.edu.au](mailto:nsi.onlinecourses@tafensw.edu.au)



[nsi.edu.au/studyonline](http://nsi.edu.au/studyonline)